



Available Online through

www.ijptonline.com

ANALYSIS OF BUCK CONVERTER USING POWER FACTOR PREREGULATOR

MATLAB SIMULINK

K.Suvarchala*^[1], R.Thangam^[2]

U.G.Students, Department of Electrical Engineering, Saveetha School of Engineering, Chennai^[1].

Assistant Professor, Department of Electrical Engineering, Saveetha School of Engineering, Thandalam, Chennai^[2].

Email: suvarchalareddy99gmail.com

Received on 10-08-2016

Accepted on 06-09-2016

Abstract:

Buck-type converters are analyzed for application as which the IEC 1000-3- 2 gauges are met is figured power component prerregulators. Two step-down converters are proposed, which agree to EMC principles on account of a helper fly back stage which employments the same switches of the primary converter in addition to a little power switch commutated at the line recurrence. With legitimate outline, the voltage anxiety of the primary switch continues as before with respect to a customary buck topology. Recreations and trial results are accounted for to approve the hypothetical investigation.

Keywords: Prerregulator, Buck converter, Fly back, Mat lab Simulink.

I. Introduction

In ac-to- dc conversion, device having a rated modern less than 16A/phase must compare with IEC a 1000-3- 2 widespread which limits the harmonic content of the modern absorbed from the mains [1]. For this cause, many converter topologies have been analyzed within the literature for use as energy thing prerregulators i.e. to provide nearly sinusoidal modern absorption and regulated dc output voltage [2-5]. Among them, the maximum popular is without a doubt the raise prerregulator, which offers the following advantages: simplicity, inherent input modern-day filtering due to the input inductance, almost harmony energy element while running in CCM with average modern mode control [5]. still, it has a few drawbacks, particularly, no hindrance of the inrush present day at begin-up, loss of quick-circuit safety and output voltage greater than height enter voltage (VO= 380-400V for frequent enter voltage range).Those barriers can be triumph over by means of using a greenback-kind prerregulator which but, shows a pulsed input modern-day and some line contemporary distortion, due to the notches round zero crossing of the road voltage. Despite the fact that, on the grounds that EC 1-3- 2 requirements permit a certain quantity of line modern-

day distortion [1,6], normally a strength variety exists in which the buck-kind preregulator meets the standards. This power variety is calculated, inside the first a part of the paper, for different voltage conversion ratios and modulation strategies. Inside the 2d component, step-down topologies are proposed which encompass a chief buck converter and auxiliary fly back stage. This latter is used to take in cutting-edge even all through the time durations wherein the principle greenback converter is inactive. on this way, the enter modern-day distortion is reduced, thus growing the beneficial energy variety. Otherwise from the scheme proposed in [7], the fly back degree uses the identical switches of the main converter for the modulation and calls for handiest additional line-frequeeny commutated stitches. Moreover, this auxiliary converter is rated for a fraction of the overall energy. Ultimately, simulation and experimental effects are stated which the

II. The Buck-Type Preregulator

The basic scheme of a buck converter used as a Preregulator is shown in Fig. 1. It consists of a diode bridge rectifier followed by a standard buck converter.

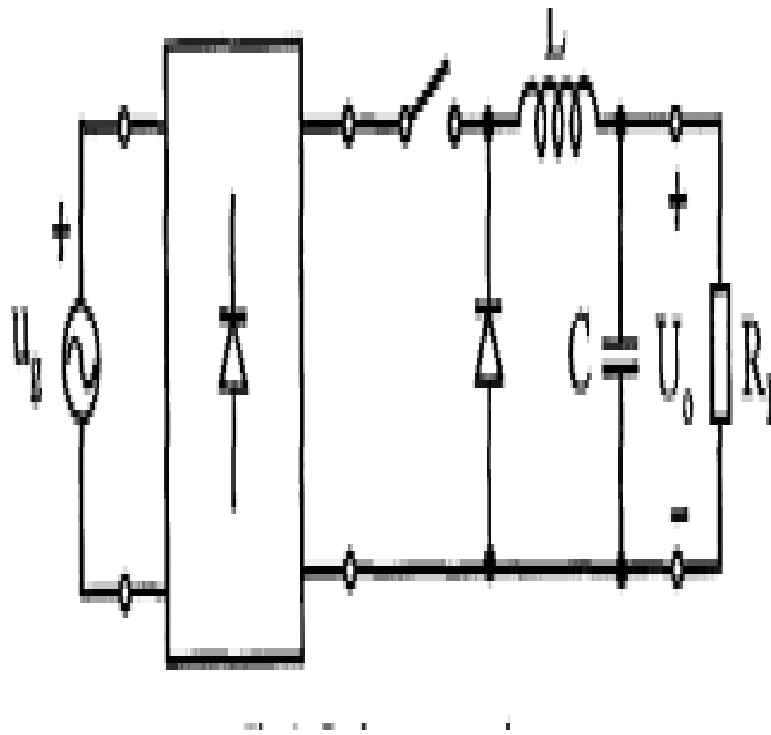


Fig. 1- Buck-type preregulator

As in buck-type preregulator, the output capacitor filters out the low-frequency components of the enter power. However, unlike the buck converter, the converter shown in Fig. 1 is able to draw contemporary from the line most effective while the input voltage is greater than the output voltage. As a zero outcome, notches seem inside the line contemporary around zero crossing of the line voltage, causing distortion.

Matlab simulation diagram for buck converter using pre-regulator:

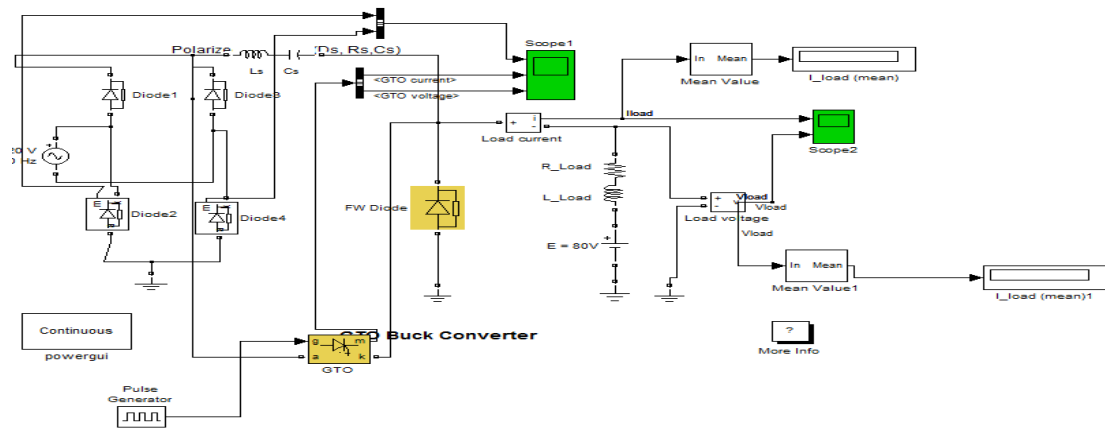


Fig .2: simulation circuit for buck converter using preregulator.

Matlab Result:

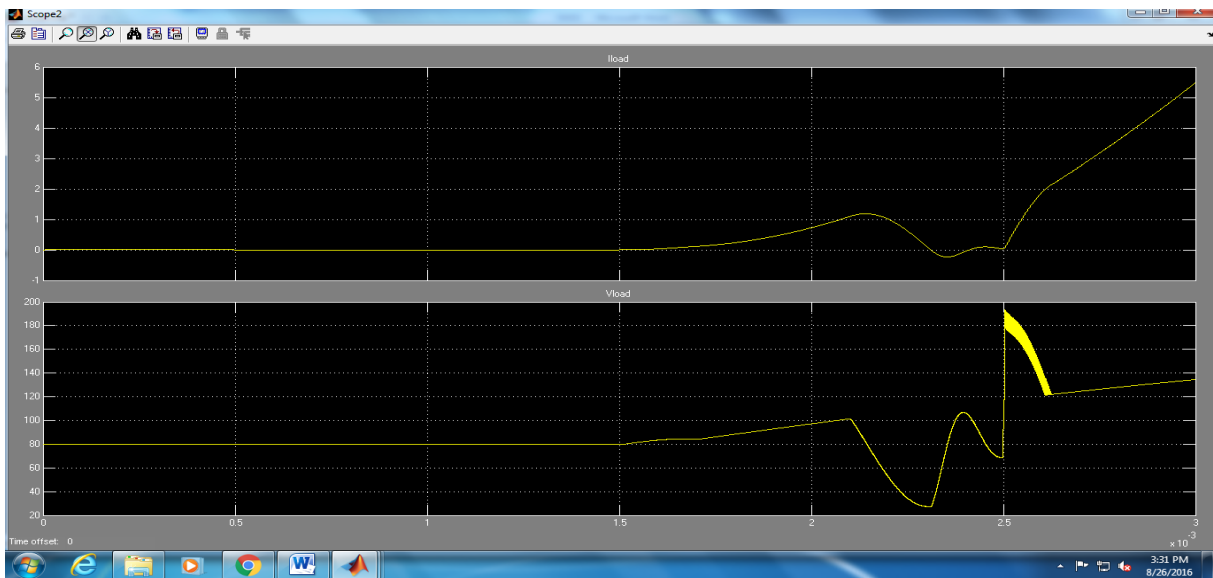


Fig.2. Output for rectifier.

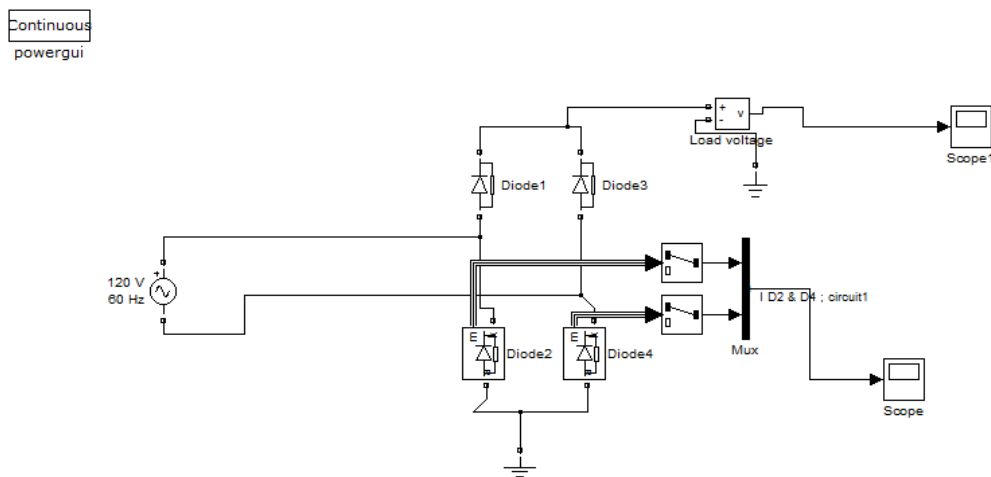
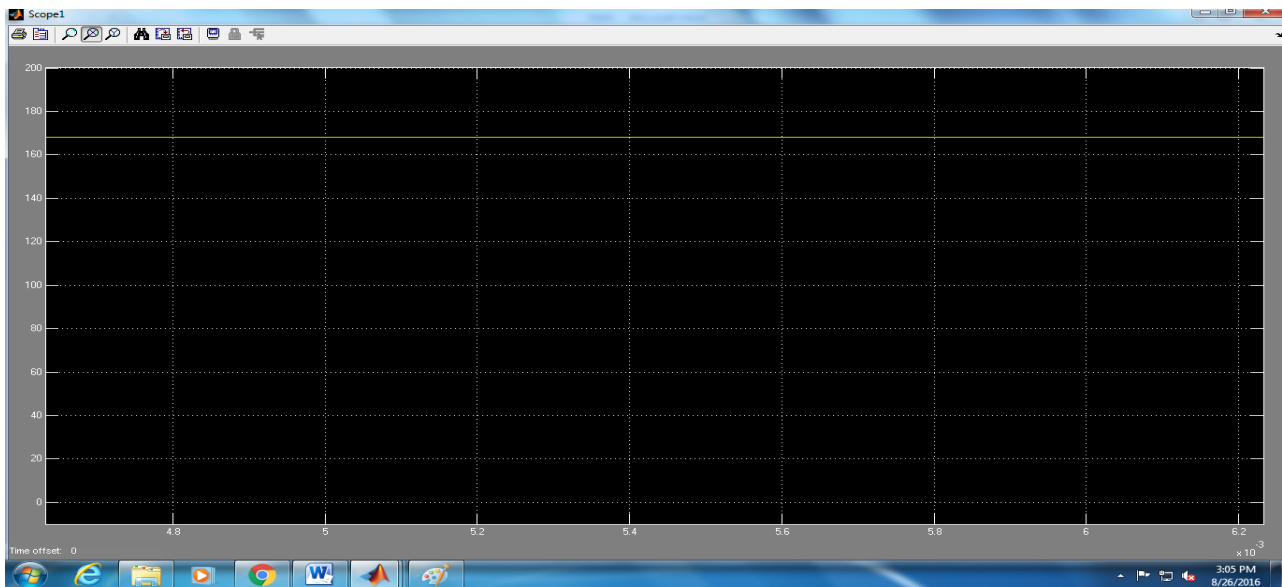


Fig .3: Circuit diagram for rectifier.

Simulation Result:**Fig.4. Output for rectifier.****Reference**

1. Cavallaro, C.; Musumeci, S.; Santonocito, C.; Pappalardo, M. "Smart photovoltaic UPS system for domestic appliances" *Clean Electrical Power*, 2009 International Conference on Volume, Issue, 91 June 2009 Page(s): 699-704.
2. B. Sahan, A.N. Vergara, N. Henze, A. Engler, P. Zacharias, "A Single-Stage PV Module Integrated Converter Based on a Low-Power Current-Source Inverter", *IEEE Transactions on Industrial Electronics*, Vol. 55, No. 7, July 2008.
3. R. Faranda and S. Leva, Energy Comparison of MPPT techniques for PV Systems, *WSES Transaction on Power Systems*, Vol. 3, pp. 446-455, 2008.